

Server Security Statement

My Training Passport Limited takes very seriously the security measures within the My Training Passport, My Asset Passport and My Training Provider systems, which includes cloud hosted portals for the monitoring and management of employee training information.

My Training Passport is a developer of “connected” training & asset management and presentation systems and has designed the web-hosted solution associated with the My Training Passport brand. The cloud-based server is hosted by Linode within the UK. Linode offers industry leading security solutions with its hosting to ensure My Training Passport is protected against malicious activity. This includes multiple layers of security via a variety of technological and human measures. Beyond that, all our equipment is in locked cages.

Linode enforce strict filtering rules to ensure that “Linodes” can only communicate using their allowed IP addresses. This prevents “Linodes” from spoofing other “Linodes” IPs or performing man-in-the-middle attacks on our private network.

All Linodes themselves operate within KVM or Xen virtualization, which ensures that each “Linode” has its own kernel and user space, which are fully separate from other “Linodes”. This ensures that a malicious “Linode” cannot access either the host itself or other “Linodes” resources.

System operations are continuously monitored and exceptional conditions are alarmed and investigated promptly. Access to the underlying servers require cryptographic keys, all unused server ports and password access are disabled.

We are confident that the design of the service is more than adequate to protect the personal information that is stored and processed by My Training passport Limited. To the best of our knowledge, we are not aware of any security breaches that have occurred. We employ a network security expert who functions both as architect and security expert to ensure our server meets the security requirements of our customers.

We do not advertise that our security is unbreakable, this would be an irresponsible claim, rather that the security steps we have undertaken are more than appropriate to protect the sensitivity of the data intended to be stored within our system.

Signed on behalf of My Training Passport Limited



..... DIRECTOR

Date: 01/03/2022

My Training Passport Limited

Manor Farm, 75E High Street, Irchester, Northamptonshire NN29 7AA England
Tel +44 (0) 3303 308 208 Email: hello@mytrainingpassport.net
www.mytrainingpassport.net

Server Architecture Overview

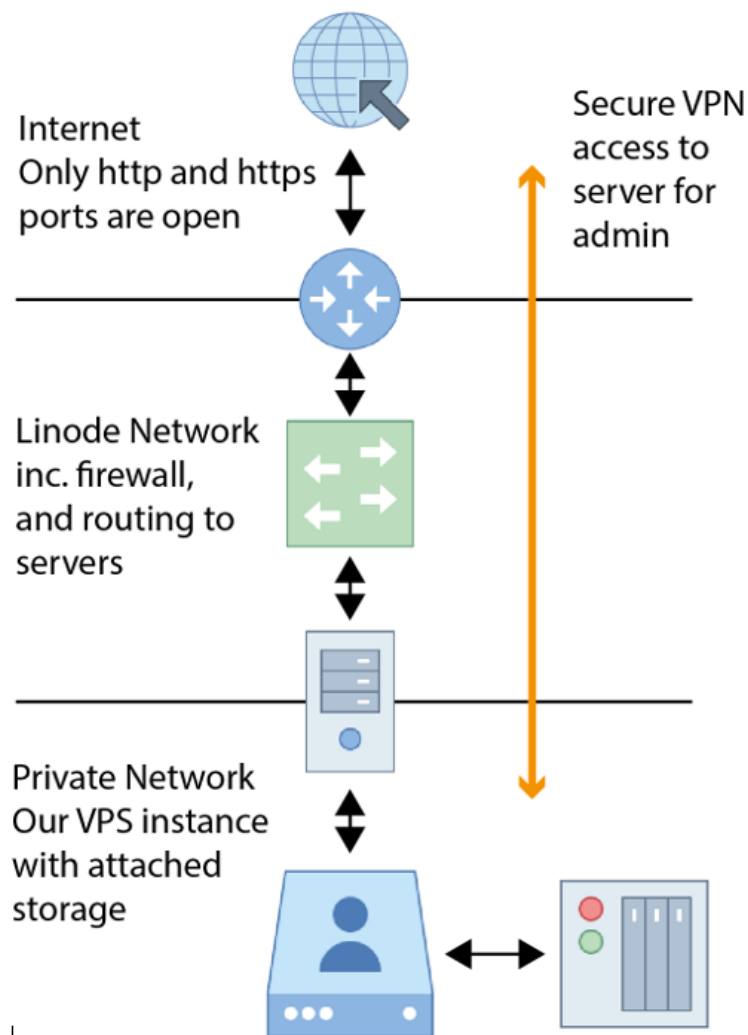
The VPS server provided by Linode is housed in their London data centre behind their network firewalls and routing systems.

The VPS server instance comprises of a single web server, database server and attached mass storage.

Only the web server has ports open to the public internet. Only those required for http and https traffic are open. All other ports are closed.

Admin access to the server is provided by a secure VPN tunnel. Server login is only allowed through private key access. The VPN port is closed when not in use. We have the ability to access the server through the secure Linode management system to reopen the port when required for server updates and maintenance.

Our standby server is closed to public traffic when not in use. Should the need arise we are able to bring this online using our daily server backup images to allow customers access to their data. This server has the same architecture and security as the main server.



My Training Passport Limited